



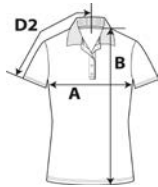
## 64800L - NEW



### Softstyle Ladies' Double Piqué Polo

#### DETAILS

<b>Weight</b>	177.0 G/SqM (White 172.0 G/SqM)
<b>Content</b>	100% Ring Spun Cotton
<b>Features</b>	Semi-fitted contoured silhouette with side seam Contoured welt collar Tearaway label Rolled forward topstitched shoulder Clean finished reversed placket with reinforced bottom box 4 colour-matched buttons Twin needle sleeve and bottom hems
<b>Sizes</b>	S-2XL
<b>Case Packs</b>	S - 2XL 36 PIECES
<b>Colours</b>	10
<b>SKU's</b>	50



#### SPECIFICATIONS

	Tol-	Tol+	S	M	L	XL	2XL
<b>Centimeters</b>							
<b>Chest (A)</b>	1.905	1.905	41.910	45.085	50.165	53.975	58.420
<b>Length from HPS (B)</b>	2.540	2.540	64.770	67.310	69.850	72.390	74.930
<b>Sleeve length (Center back) (D2)</b>	1.905	1.905	38.100	39.370	41.275	43.180	45.720
<b>Inches</b>							
<b>Chest (A)</b>	0.750	0.750	16.500	17.750	19.750	21.250	23.000
<b>Length from HPS (B)</b>	1.000	1.000	25.500	26.500	27.500	28.500	29.500
<b>Sleeve length (Center back) (D2)</b>	0.750	0.750	15.000	15.500	16.250	17.000	18.000

#### S-2XL

COLOURS	Code	Comments
Black	036	
Charcoal	042	
Forest Green	033	
Heliconia	010	
Navy	032	
Red	040	
Ring Spun Sport Grey	295	
Royal	051	
Sapphire	026	
White	030	

#### CHANGES

<b>Additions</b>	S, M, L, XL, 2XL	Black, Charcoal, Forest Green, Heliconia, Navy, Red, Ring Spun Sport Grey, Royal, Sapphire, White
<b>Total Net Change</b>	50 SKU's	